

EASY LEVEL

The goal of crossword puzzles is to fill all the squares with words by solving the clues. Refer to the hints indicated under the crossword to get the tech-related answers.



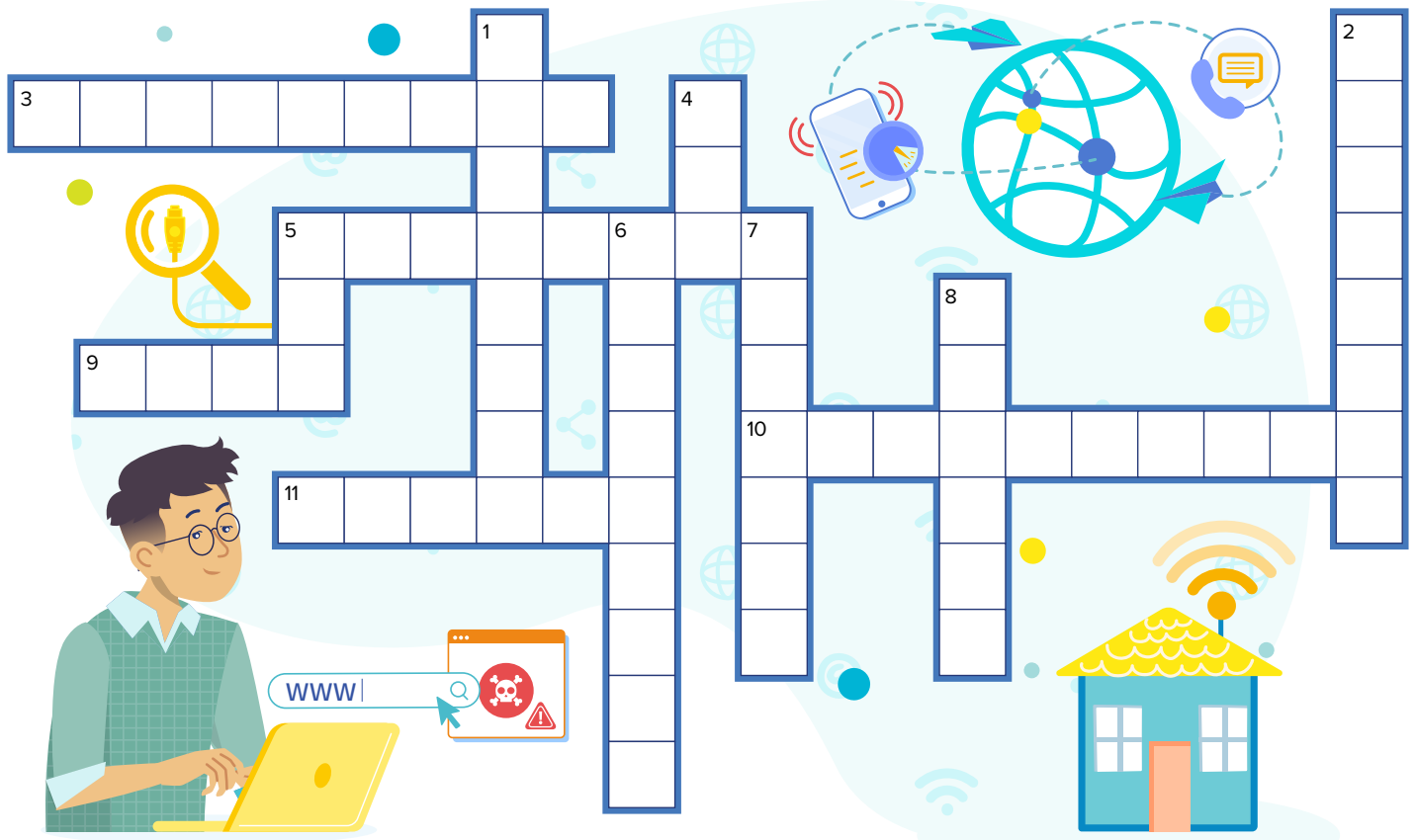
ACROSS

- 2 It refers to the buying or selling of products through online
- 6 This is the process of accessing an account online
- 7 A highlighted section that opens to a different website when clicked
- 8 What do you call the company that provides internet services
- 10 A device that allows your computer or gadgets to connect to the Internet wirelessly

DOWN

- 1 A group of two or more computers (or other devices) linked together to exchange data and share resources
- 3 A file format commonly used for audio
- 4 Short for wireless fidelity
- 5 Malicious software that can damage devices
- 9 A malicious code created to steal sensitive information from a device or damage it entirely

DIFFICULT LEVEL



ACROSS

- 3** Refers to the maximum volume of information transmitted over an internet connection within a given amount of time
- 5** A network security device that controls all traffic from your network and blocks any unauthorized access through a series of security rules
- 9** A protocol that enables voice communication online or over the Internet instead of using a phone line
- 10** The conversion of data into code for security and privacy
- 11** Brief intermittent delays when transferring data online

DOWN

- 1** A means of connecting a computer to a WiFi network using a wired connection
- 2** A fraudulent activity involving someone pretending to be someone else online to obtain personal data or deploy the malware into the victim's device
- 4** Extensible Markup Language
- 5** A protocol that allows transferring of files remotely from one server/system to another
- 6** The process of solving complex computer science problems
- 7** It is the amount of time data takes to pass from one network to another
- 8** Refers to the unlicensed copying and distribution of any intellectual property with copyright